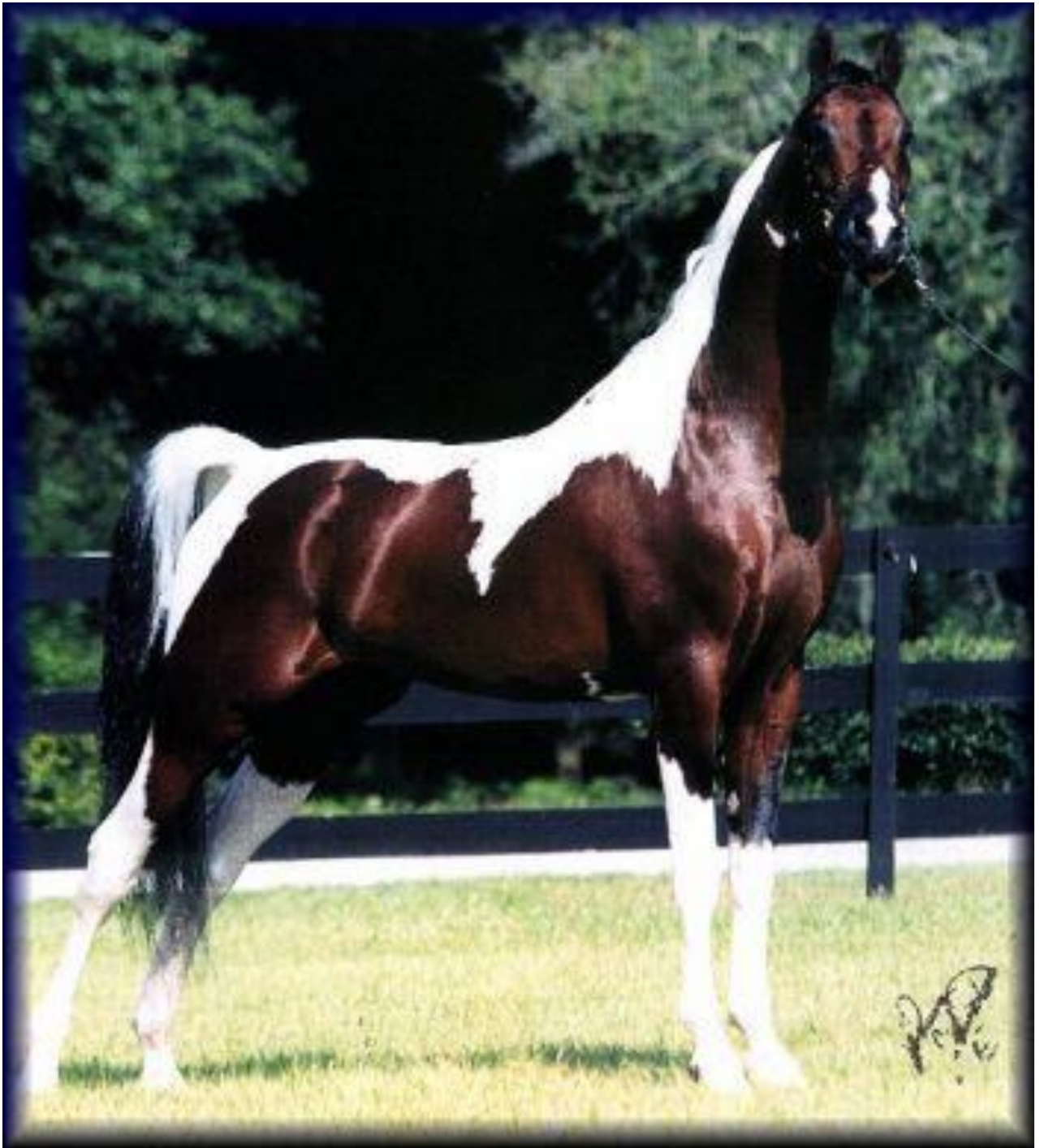


# The National Show Horse

---



**A cross between the Arabian Horse & the American Saddlebred Horse.  
Combining the best of both breeds - often with colour as well.**

The National Show Horse must possess only Arabian and American Saddlebred bloodlines – with at least 25% up to 99% being Arab, the remainder being solely Saddlebred, although the vast majority will be straight crosses (50%). Obviously those National Show Horses that have a lot of Arabian blood will resemble Arabians and those with a lot of Saddlebred blood will resemble Saddlebreds there is no right or wrong to this your National Show Horse will resemble the breed that appeals to you the most. The two separate breeds are shown in a similar fashion in America and so is this exciting new crossbreed, the National Show Horse. Exhibited with a full mane and tail, the National Show Horse is trotted into the ring, stood up for inspection and then trotted again. Often the breed has a trimmed bridle path and braids in his forelock and mane, reflecting his Saddlebred heritage.

The National Show Horse combines the refinement of the Arabian with the animation of the Saddlebred, resulting in a high-set, upright, long, swan-like neck of the Saddlebred, without a pronounced crest. The head is usually refined and small, with small ears and either a straight or concave profile. The horses are close-coupled with a level topline and have a very deep, laid back shoulder with the tail carried high. There are no minimum or maximum heights to the National Show Horse, although most will fall in the 15hh-16hh range.

The National Show Horse can come in any colour – the more colourful representatives coming from the Saddlebred ancestry. Due to the Saddlebred ancestry it is also possible to have gaiting National Show Horses.

Some UK National Show Horses:



The National Show Horse shall strive to produce an athletic horse which retains size, beauty and refinement. Specifically, the following traits are desirable:

- A. Motion.** Balanced and obvious power from the hindquarters flowing into an elevated front end, the front legs showing both flexion and extension;
- B. Neck.** Very long, set high on the shoulder and relatively upright with fine throatlatch. The neck should be shapely but without a pronounced crest;
- C. Head.** Relatively small, short and refined with large eyes and small, well placed ears and a straight or slightly concave profile (a "Roman nosed" or convex profile is not desirable);
- D.** Pronounced withers and a very deep and well laid back shoulder;
- E.** Proportionately short back closely coupled with a long hip and relatively level top line (moderately sloping croup not to be penalized);
- F. Legs.** Correct from all angles with long forearms and short cannon bones in front and long, well angled pasterns front and rear;
- G.** Refinement of bone but not lacking in substance, especially in the chest, girth, shoulder and hip;
- H.** A relatively high set tail, natural and flowing;
- I.** When observed at rest or in motion, the horse must exhibit a natural presence and, when animated, extreme brilliance. The horse must exhibit high carriage when showing or relaxed.

In the UK a registry for National Show Horses was set up in 1986 by Mrs A Hawke and handed over to the United Saddlebred Association in 1997. The United Saddlebred Association recognises the National Show Horse as a breed within its own right and all horses are dual registered and entered on both the partbred Saddlebred (if possessing at least 12.5% Saddlebred) and the National Show Horse registries. A National Show Horse registered with both breeds (the Saddlebred and the Arabian) is eligible to compete in classes for either breed. The Arab Horse Society has its own Championship Show, as does the United Saddlebred Association.

**On December 1, 2009 the National Show Horse Registry amended their rules so that the ONLY requirement for NSHR eligibility was that all horses must contain at least 50% Arabian Blood – they could now be crossed with any other breed.**

**For more information contact the NSHR: [www.nshregistry.org](http://www.nshregistry.org)**

At our subsequent AGM, USA-UK voted against implementing this new rule, as it now made a National Show Horse nothing more than a Partbred Arab – the speciality of the NSH was the cross between the Arab and the Saddlebred. In order to be eligible to be accepted for NSH registration with the United Saddlebred Association, horses can only possess a combination of Arabian and American Saddlebred bloodlines.

For more information view our website: [www.american-saddlebred.co.uk](http://www.american-saddlebred.co.uk)